

ADDRESSING THE NEEDS OF INFORMATION TECHNOLOGY AND BUSINESS USERS WITH FAST AND FLEXIBLE SOLUTIONS



As business operation expands, business processes become more complex. Quite often, a disconnect occurs when these processes do not translate business policies well, disrupt the inter-connectivity to other processes that make up the entire operation, or when authors of changes leave.

Providing Business Users Timely Solutions

RulesMachine is a Business Rules Management System (BRMS) built on Jboss Rules Engine.

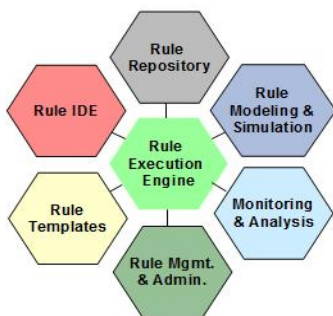
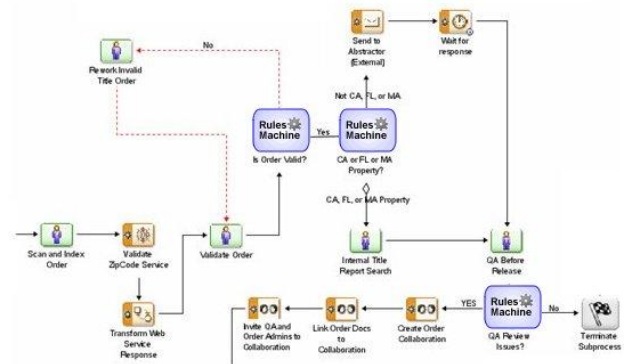
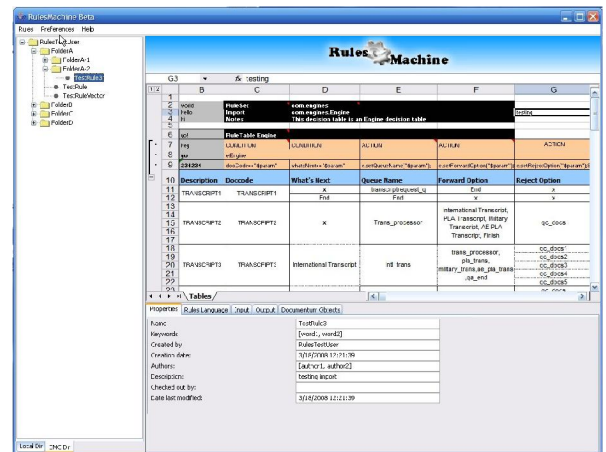
RulesMachine aims to provide a simple framework to empower various entities in business operations to easily track, change, and manage business rules that drive its business processes without relying solely on their IT department.

RulesMachine can be called from any application, code, and

Business Process Management, and other tools supporting corporate governance.

Rules can be easily created and managed by business users using a simple spreadsheet-based UI accessible through an Internet browser. The rules are interfaced through any application via web services.

RulesMachines is a Design for EMC (DFE) certified product. It offers a full-featured BRMS through a tight-integration with EMC's Documentum.



Why RulesMachine BRMS?

RulesMachine offers powerful and flexible modules identified by Gartner Research to meet a full-featured Business Rules Management System.

- Rules Execution Engine powered by Jboss Rules with built-in enhancements in RulesMachine
- Rules Management and Administration using an easy to use RulesMachine Studio
- Rules Sample Templates available for customers to immediately use out of the box
- Rules IDE using built-in Java libraries
- Rules Repository through a network directory or Documentum repository
- Rules Modeling & Simulation through various BPMS tools



Getting the most out of your applications

Simplicity is key. RulesMachine is scalable and flexible.



RulesMachine enhances Jboss Rules™, one of the top industries open source and standards based business rules engine from RedHat.

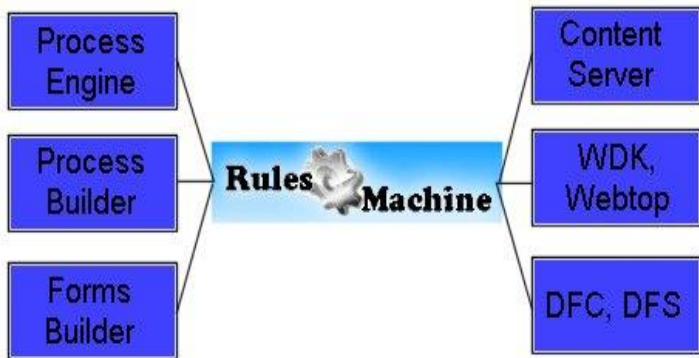
Trends Global is an EMC velocity and Design for EMC partner. Its close relationship with EMC product group allows for a closer support from EMC.

RulesMachine allows users to quickly build applications with less challenges for future modifications.

“ Trends Global helped us implement 10 applications in less than a year with a BPM based SOA infrastructure ”
STEPHEN CALLAHAN
IT DIRECTOR, APOLLO GROUP

Trends Global provides global onsite and offshore consulting services, often considered to be an integral method in present day global competition.

Trends Global experience in building SOA based infrastructure helps build applications faster with a lot of flexibility.



EMC Documentum Integrations

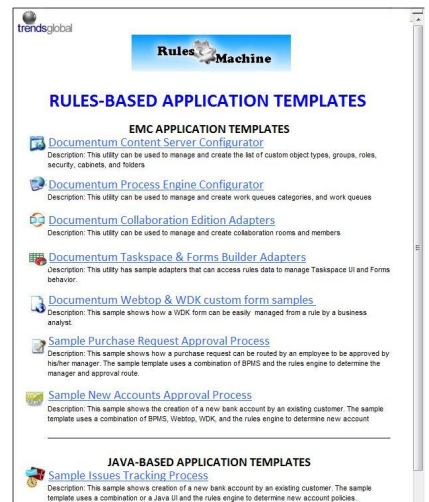
RulesMachine offers integration to various Documentum software for a flexible and faster deployment.

- Process Engine/Content Server configuration
- Process Builder activity template
- Forms Builder adapter
- Taskspace adapter
- Webtop/WDK support
- DFC/DFS support

Templates for Business Solutions

Trends Global offers a suite of sample templates that help accelerate the design, development, and roll-out of your applications.

- Documentum Content Server Configurator
- Documentum Process Engine Configurator
- Documentum Collaboration Edition Configurator
- Documentum Process Builder Activity Template
- Documentum Taskspace & Forms Builder Adapters
- Documentum Webtop & WDK custom form samples
- Sample Java based application using RulesMachine



Trends Global

6350 Carson Pass Way
Livermore, CA 94551
800.964.1366